

CentriPure P Hydrated Gel Filtration Columns

For rapid protein purification, desalting, and buffer exchange



Precision filled.
Ready to use.

CentriPure P Gel Filtration Columns are specifically designed for rapid and efficient removal of small molecules from antibodies, enzymes and other proteins.

Ultrapure gel and specially treated sinter frits ensure outstanding resolution and high selectivity.



easy
efficient
precise



CentriPure P Hydrated Gel Filtration Columns

For rapid protein purification, desalting, and buffer exchange



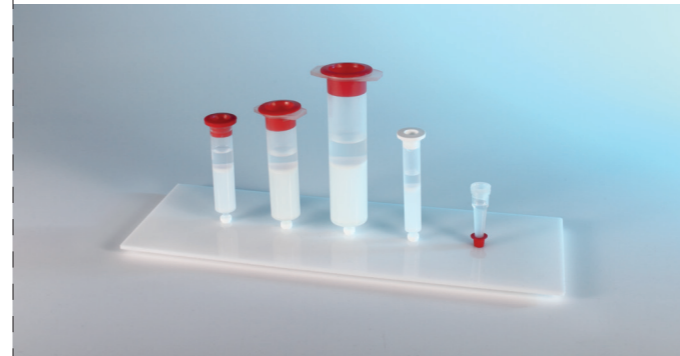
easy 4 step protocol



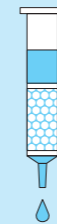
The gel matrix of **CentriPure** is **Zetadex-25**, a beaded composite material developed by **emp BIOTECH** and comprised of ultrapure cross-linked dextran. It exhibits high selectivity, high resolution and chemical stability.

Molecules purified with **Zetadex-25** are separated according to size. Smaller molecules pass significantly slower through the column than larger molecules. Buffer and pH effects on resolution are minimal.

The molecular weight cut-off (MWCO) for **Zetadex-25** is 5 kD for proteins. Proteins larger than 5 kD are typically purified with a 1.5-fold elution volume.



1. Column Preparation



Remove the cap from the top and then the white bottom cap of the **CentriPure P** Column.

Allow excess column fluid to drain (via gravity) into a suitable waste reservoir.

2. Column Equilibration



Equilibrate the column by loading it with 5x the bed volume of water or buffer (use the same buffer for equilibration and elution). Allow the equilibration buffer to drain completely.

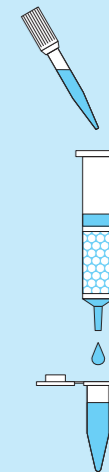
3. Sample Application



Transfer the sample to the **CentriPure P** Column.

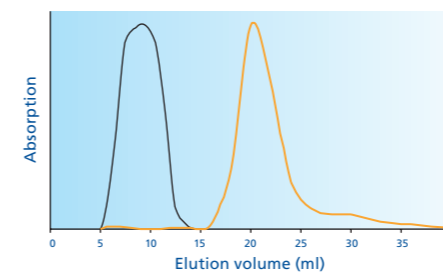
Allow the sample to enter the gel bed completely.

4. Elution



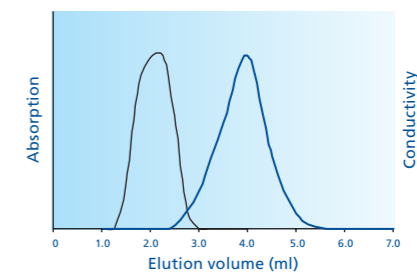
Place a tube for sample collection under the **CentriPure P** Column. Transfer the elution buffer to the column and elute the purified sample.

High Performance Results:



Removal of fluorescent dye

Ovalbumin (280 nm): black line
FAM (490 nm): orange line
Elution profile overlay of albumin (5 mg OvA) and free dye (2.5 μ mol FAM) in DMSO/ NaHCO_3 , elution with water (5.0 ml sample volume).



Desalting of protein solution

(1 mg anti-rabbit IgG in 1 ml 0.8 M NaCl), elution with water (black line: protein – 280 nm; blue line: salt – μ S/cm)

CentriPure P

Hydrated Gel Filtration Columns

For rapid protein purification, desalting, and buffer exchange



Catalog No.	Name	Sample Volume	Pack Size
CP-0110	CentriPure P2	150 – 300 µl	50 Columns
CP-0106	CentriPure P5	0.5 ml	50 Columns
CP-0107	CentriPure P10	1.0 ml	50 Columns
CP-0108	CentriPure P25	2.5 ml	25 Columns
CP-0113	CentriPure P50	5.0 ml	10 Columns
CP-0119	CentriPure P100	10.0 ml	10 Columns

Select the right column for the volume of your sample.

For more information, please contact us at +49 30 9489 2201 or tech@empbiotech.com

03/2014

